

A. Identity

Subject: English Literature	SEMESTER FIVE	Time allocation 10 X 45
-----------------------------------	------------------	-------------------------------

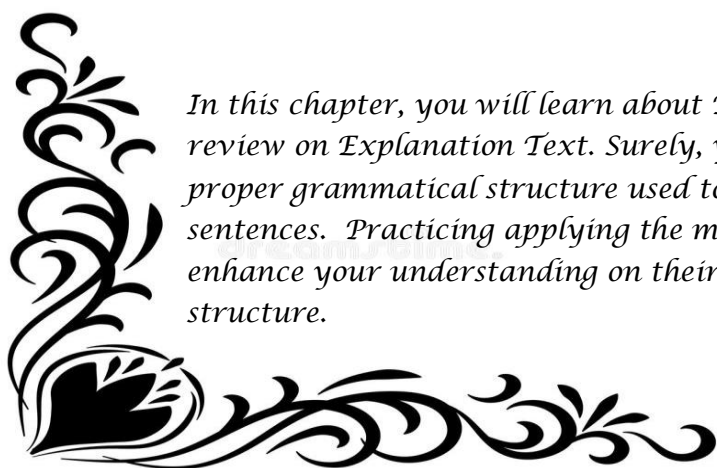
Basic Competence

3.2 menerapkan fungsi sosial, struktur teks, dan unsur kebahasaan teks interaksi transaksional lisan dan tulis yang melibatkan tindakan memberi dan meminta informasi terkait benda dengan pewatas berupa sifat, jenis, dan fakta keadaan/kejadian, sesuai dengan konteks penggunaannya. (Perhatikan unsur kebahasaan *prepositional phrase*, *adjective clause*: finite dan *non-finite*)

4.2 menyusun teks interaksi transaksional lisan dan tulis yang melibatkan tindakan memberi dan meminta informasi terkait benda dengan pewatas berupa sifat, jenis, dan fakta keadaan/kejadian, dengan memperhatikan fungsi sosial, struktur teks, dan unsur kebahasaan yang benar dan sesuai konteks

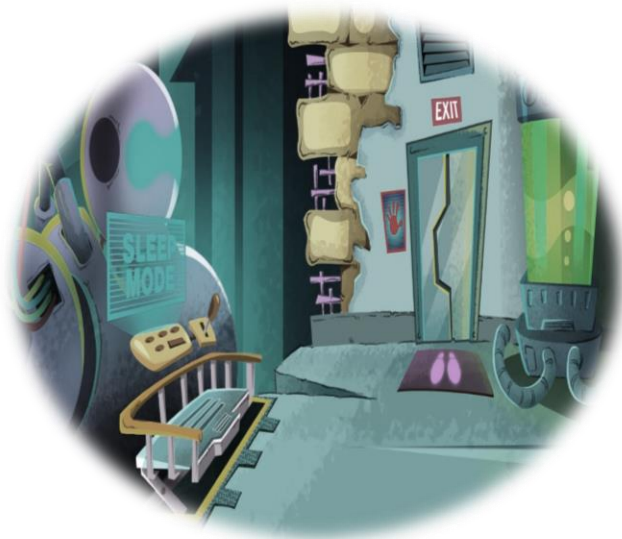
**Prepositional Phrases
and Explanation text**

LEARNING PURPOSE



In this chapter, you will learn about Prepositional Phrases and review on Explanation Text. Surely, you will have to know the proper grammatical structure used to make meaningful sentences. Practicing applying the material is needed to enhance your understanding on their social function and the structure.

BEFORE LEARNING



Fill in the blank with the correct preposition!

1. He entered this library ... midnight.
2. This factory will have produced a million ventilators ... the end of this year.
3. The doctors ... the remote regions must ride ... horses to get the patients' house.
4. I saw some strangers go ... the laboratory some minutes ago.
5. Don't put the blanket ... the person who has high fever.
6. This virus is the most dangerous ... the others.
7. Wernher von Braun (1912-(1977) was obsessed ... rockets ... a very young age.
8. Mr. Andhika was responsible ... the shipment ... the huge pillars.
9. Kevin Warwick (1954) is turning himself ... a cyborg ... real.
10. People are amazed ... novels ... Dan Brown ... his brilliance ... revealing science.

WHILST LEARNING

THERE ARE TWO KINDS OF PREPOSITIONAL PHRASE:

1. Adjectival phrase used to modify noun
2. Adverbial phrase used to modify verb

Activity one

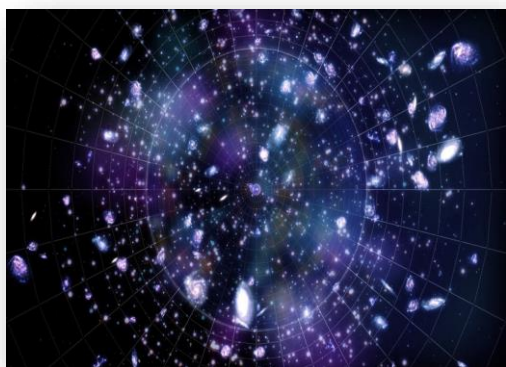
In these activities, you will learn about how Adjective, Adjectival Phrase, and Adjective Clause modify (explain) noun.

A. Choose which are the adjectives. then make sentences of them!

- | | | | |
|-------------------|----------------|----------------|-----------------|
| 1. Stranger | 6. Brainy | 11. Enthusiasm | 16. Capable |
| 2. Responsibility | 7. Nervous | 12. Distant | 17. Crucial |
| 3. Scientific | 8. Fame | 13. Eventual | 18. Possible |
| 4. Gigantic | 9. Microscopic | 14. Impression | 19. Destructive |
| 5. Harm | 10. harm | 15. Danger | 20. Infinite |

B. Fill in the blank with the meaningful prepositional phrase! Use your knowledge on science.

1. The biggest explosion in ... ends the life of ...
2. The brightest star in ... is Arcturus whose diameter is 25 times of ...
3. We cannot measure dimensions in ... in kilometers as they are so vast.
4. Huge radio dishes are required to capture radio signals in ...
5. To test theories on ..., scientists built the biggest computer simulation, The Millennium Run.
6. Does the life begin with the seed of ...?
7. Magnifying things needs combinations of
8. Microscope can show the tiniest thing to appear as monstrous as the creatures from
9. Doctors use Transmission Electron Microscopes (TEM) to see the microscopic things in
10. Some protozoa are helpful because they are the food for
11. Laser beam is a mean that can measure accurately the distance between
12. Some volcanologists gather data in extreme ways, such as testing volcanic material near
13. The force of ... is smaller than the thrust of a jumbo jet's engine.
14. Some scientists with ... are working on ...
15. He told about his experiment with ...



C. Develop the sentences below by adding adjective clause on each noun!

1. Students are often confused about mass.
2. Universe is filled with natural radiation.
3. The nuclear bomb can destroy a city.

4. Gamma radiation is the most dangerous due to its small particles.
5. The digestive system breaks down food into chemicals.
6. The sex organs are functional in the reproductive system.
7. Skin has many functions
8. Our body consists of 100 trillion cells.
9. Protein is needed to make hormones functional.
10. Body chemicals help our body work.

Activity TWO

In this activity, you are learning on Adverbial Phrases.

A. Choose the correct adverbial phrases in the box to complete the sentences below!

- | | |
|--|--|
| <ol style="list-style-type: none"> 1. Essential fat is needed.... 2. We can find minerals.... 3. The body knows how to grow and what to do.... 4. Our body gets the energy.... 5. The vital reactions in our body cannot take place.... 6. The heart pump blood.... 7. The heart's muscular wall contract and relax.... 8. Blood vessels branch out.... 9. The body makes two million red cells.... 10. Fibrin protects the wound.... 11. Body cannot survive for long.... 12. The body continually generates heat.... 13. Tiny bursts of energy are constantly released.... 14. The process of taking the warm water out from the body and cooling the skin happens.... 15. Hypothalamus generates heat | <ol style="list-style-type: none"> a. without the continuous input of energy from food b. by consuming Carbohydrate c. in bones d. due to the DNA e. about 70 times a minute f. for body tasks g. without water h. in a second i. around the whole body j. from wide arteries into narrow capillaries k. until the complete healing l. by moving the muscles and triggering reactions in the liver m. during the process of respiration n. under the instruction of hypothalamus o. by boosting cell activity and making muscles move rapidly in shivers. |
|--|--|

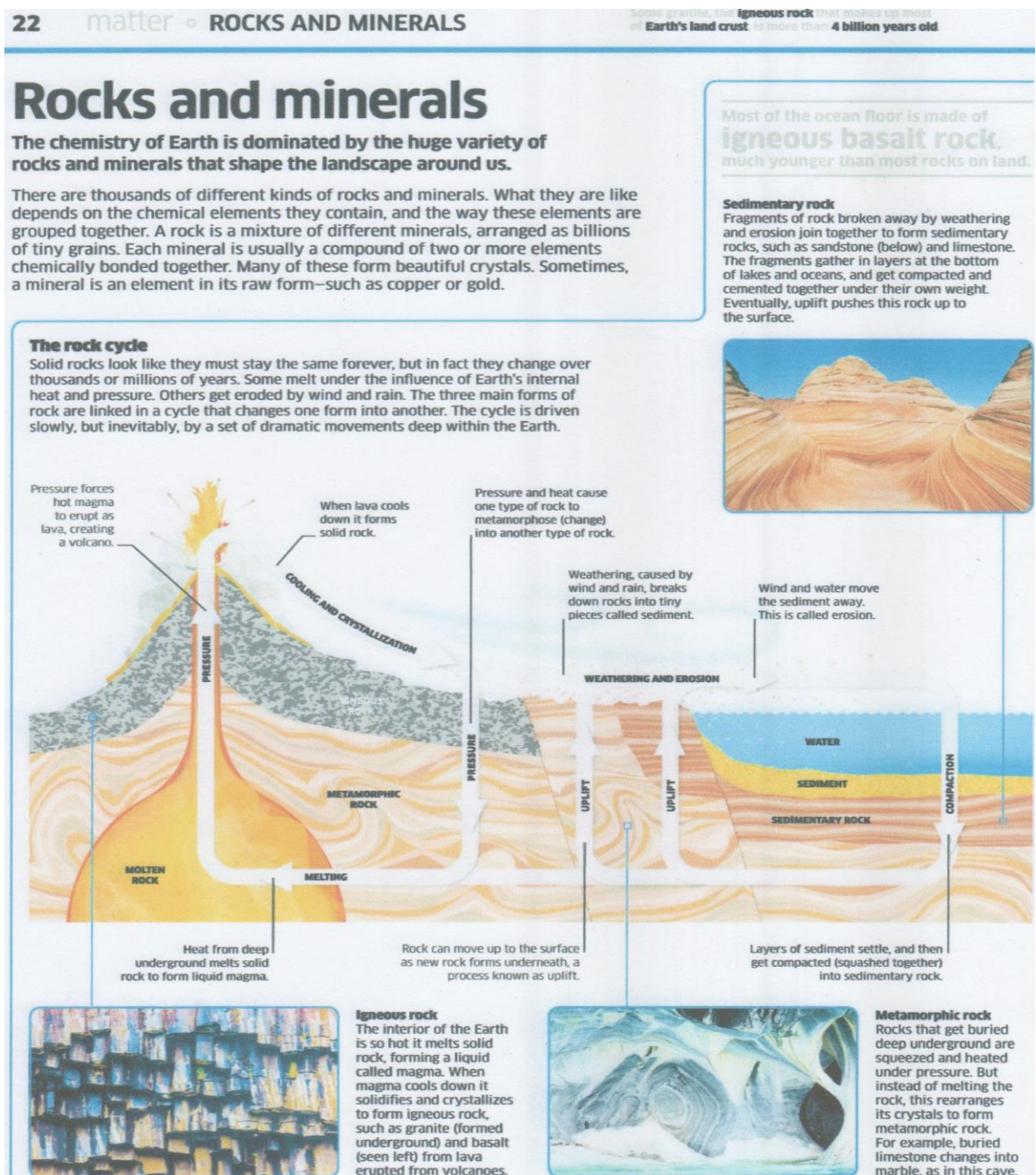
B. Identify the function of each adverbial clause in part A!

Activity Three

In this activity, you will review on Explanation text.

Develop this paragraph below based on the given picture! (picture is taken from SMITHSONIAN Encyclopedia)

The rock cycle Solid rocks look like they must stay the same forever, but in fact they change over thousands or millions of years. Some melt under the influence of Earth's internal heat and pressure. Others get eroded by wind and rain. The three main forms of rock are linked in a cycle that changes one form into another. The cycle is driven slowly, but inevitably, by a set of dramatic movements deep within the Earth.



CLOSING

TO ENSURE YOUR MASTERING THIS MATERIAL, PLEASE ANSWER THESE QUESTIONS!

1. What is the social function of Prepositional Phrases?
2. What makes Adjectival phrase different from the adverbial one?
3. Mention the generic structure of Explanation text

SELF-REFLECTION ON THE MASTERY OF MATERIALS

No	Questions	Yes	No
1.	Do you understand the social function of Prepositional phrases?		
2.	Do you understand how Adjectives, Adjectival phrase and Adjective Clause are different from one to another?		
3	Can you apply prepositional phrases in sentences?		
4.	Can you identify an Explanation test?		

